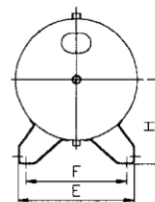
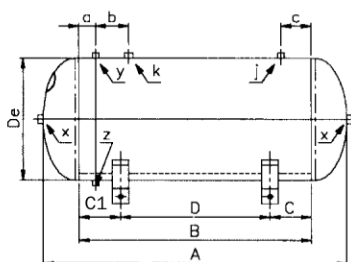


Serbatoi orizzontali

Serie OSA con staffe



Caratteristiche generali

Capacità: 10 - 3000 Lt

Pressione: 11 - 16 Bar

Collaudo: CE87/404 - 97/23 CE (PED)

Materiale: acciaio al carbonio

Trattamento superficiale: grezzo, verniciato azzurro RAL 5015 (a richiesta zincato a caldo)

Serbatoi orizzontali standard 11/12 Bar

Capacità	Codice		Pressione Bar	DE mm	A mm	B mm	C mm	C1 mm	D mm	E mm	F mm	H mm	a mm	b mm	c mm	x in	y in	z in	k in	j in
	Grezzo	Verniciato																		
10 Lt.	10-OSA/G-11-CE	10-OSA/V-11-CE	11	169	506	410	105	66	240	205	172	114,5	N.D.	N.D.	66	1"	N.D.	3/8"	N.D.	3/8"
15 Lt.	15-OSA/G-11-CE	15-OSA/V-11-CE	11	196	522	410	96	74	240	205	172	135	N.D.	N.D.	67	1"	1"	3/8"	N.D.	3/8"
24 Lt.	24-OSA/G-11-CE	24-OSA/V-11-CE	11	240	592	450	50	110	290	235	180	165	N.D.	N.D.	34	1"	N.D.	3/8"	N.D.	3/8"
50 Lt.	50-OSA/G-11-CE	50-OSA/V-11-CE	11	286	766	600	114	66	420	290	240	188,5	N.D.	N.D.	59	1"	N.D.	1/2"	N.D.	1/2"
100 Lt.	100-OSA/G-11-CE	100-OSA/V-11-CE	11	350	1115	875	95	80	700	356	310	245	N.D.	N.D.	51,5	2"	N.D.	1/2"	N.D.	1/2"
200 Lt.	200-OSA/G-11-CE	200-OSA/V-11-CE	11	446	1364	1100	175	175	750	440	386	288	50	150	50	2"	3/8"	3/8"	1/2"	1/2"
270 Lt.	270-OSA/G-11-CE	270-OSA/V-11-CE	11	500	1458	1150	175	175	800	463	409	315	50	130	120	2"	3/8"	3/8"	1"	1/2"
500 Lt.	500-OSA/G-11-CE	500-OSA/V-11-CE	11	600	1858	1500	150	150	1205	542	470	380	60	150	60	2"	3/8"	3/8"	1"	1/2"
720 Lt.	720-OSA/G-11-CE	720-OSA/V-11-CE	11	750	1900	1400	225	225	950	570	460	490	60	140	N.D.	2"	3/4"	3/8"	1/2"	N.D.
900 Lt.	900-OSA/G-11-CE	900-OSA/V-11-CE	11	800	1960	1500	250	250	1000	605	475	520	130	1200	130	2"	3/8"	3/8"	3/4"	1/2"
1000 Lt.	1000-OSA/G-12-PED	1000-OSA/V-12-PED	12	800	2158	1700	265	265	1015	605	487	N.D.	85	N.D.	N.D.	2"	3/8"	3/8"	N.D.	1/2"
2000 Lt.	2000-OSA/G-12-PED	2000-OSA/V-12-PED	12	DIMENSIONI A RICHIESTA																
3000 Lt.	3000-OSA/G-12-PED	3000-OSA/V-12-PED	12																	

Serbatoi orizzontali speciali 15/16 Bar

Capacità	Codice		Pressione Bar	DE mm	A mm	B mm	C mm	D mm	E mm	F mm	H mm	a mm	b mm	c mm	x in	y in	z in	k in	j in
	Grezzo	Verniciato																	
50 Lt.	50-OSA/G-15-CE	50-OSA/V-15-CE	15	305	784	600	100	400	285	236	202	sup. 100 inf. 300	N.D.	100	1/2"	1/2"	1/2"	N.D.	1/2"
100 Lt.	100-OSA/G-16-CE	100-OSA/V-16-CE	16	370	1016	800	125	550	352	306	258	45	80	45	1/2"	3/8"	3/8"	1/2"	3/8"
150 Lt.	150-OSA/G-16-CE	150-OSA/V-16-CE	16	396	1240	1000	175	650	356	310	271	50	130	50	1/2"	3/8"	3/8"	1/2"	3/8"
200 Lt.	200-OSA/G-15-CE	200-OSA/V-15-CE	15	446	1364	1100	175	750	440	386	288	50	150	50	1/2"	3/8"	3/8"	1/2"	1/2"
270 Lt.	270-OSA/G-16-PED	270-OSA/V-16-PED	16	500	1458	1150	175	800	463	409	315	50	130	50	2"	3/4"	3/4"	1"	1/2"
500 Lt.	500-OSA/G-16-PED	500-OSA/V-16-PED	16	600	1900	1500	150	1205	530	470	385	60	150	60	2"	3/8"	3/8"	1"	3/8"
1000 Lt.	1000-OSA/G-16-PED	1000-OSA/V-16-PED	16	800	2158	1700	265	1015	605	487	510	85	150	50	2"	3/8"	3/8"	1"	1/2"