
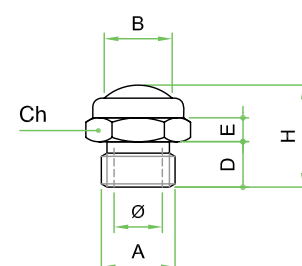


### Silenziatore Rete Esagono • SREX • Hexagonal Grid Silencer

INOX


SREX	Codice	Articolo	A	Ø	B	D	E	H	CH
	300	SREX M5	M5	2,5	5,5	4	3	8	8
	301	SREX 1/8	1/8"	6	9,5	6	4	15	13
	302	SREX 1/4	1/4"	8,5	11	8	5	18	16
	303	SREX 3/8	3/8"	11,5	14,5	8	5	20	19
	304	SREX 1/2	1/2"	15	19	10	6	22	24
	305	SREX 3/4	3/4"	20	24	10	6	26	30
	306	SREX 1	1"	26	31	10	6	28	36

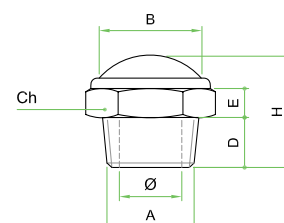


Silenziatore con cupola in filo inox AISI 316L ribattuta su base esagonale in acciaio inox AISI 316L  
Silencer with dome of stainless steel AISI 316L - AISI 316L hexagonal base

### Silenziatore Rete Esagono • SREX/NPT • Hexagonal Grid Silencer

INOX


SREX/N	Codice	Articolo	A	Ø	B	D	E	H	CH
	311	SREX/N 1/8 NPT	1/8"	6	9,5	7	4	16	13
	312	SREX/N 1/4 NPT	1/4"	8	11	11	5	21	16
	313	SREX/N 3/8 NPT	3/8"	11,5	14,5	11	5	23	19
	314	SREX/N 1/2 NPT	1/2"	15	19	15	6	27	24
	315	SREX/N 3/4 NPT	3/4"	20	24	16	6	32	30
	316	SREX/N 1 NPT	1"	26	31	19	6	37	36

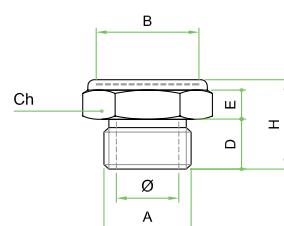


Silenziatore con cupola in filo inox AISI 316L ribattuta su base esagonale in acciaio AISI 316L filettatura NPT  
Silencer with dome of stainless steel AISI 316L - AISI 316L hexagonal base with thread NPT

### Silenziatore Microforato Esagono • SMEX/G • Hexagonal Micro-Grid Silencer

INOX


SMEX/G	Codice	Articolo	A	Ø	B	D	E	H	CH
	325	SMEX/G 1/8	1/8"	6	10	8	4	15	14
	326	SMEX/G 1/4	1/4"	8	12,5	8	4	15	17
	327	SMEX/G 3/8	3/8"	12	17,5	10	5	18	22
	328	SMEX/G 1/2	1/2"	15	21,5	12	7	22	27
	329	SMEX/G 3/4	3/4"	20	28	15	9	27	32
	330	SMEX/G 1	1"	26	34	18	11	32	41

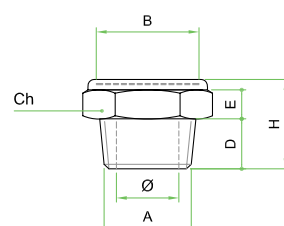


Silenziatore con rete microforata inox AISI 316L ribattuta su base esagonale in acciaio inox AISI 316L  
Silencer with micro grid of stainless steel AISI 316L - AISI 316L hexagonal base

### Silenziatore Microforato Esagono • SMEX/NPT • Hexagonal Micro-Grid Silencer

INOX

SMEX/N	Codice	Articolo	A	Ø	B	D	E	H	CH
	350	SMEX/N 18 NPT	1/8"	6	9	7	4	14	14
	351	SMEX/N 1/4 NPT	1/4"	8	13	11	4	18	17
	352	SMEX/N 3/8 NPT	3/8"	12	18	11	5	18	22
	353	SMEX/N 1/2 NPT	1/2"	15	22,5	15	7	25	27
	354	SMEX/N 3/4 NPT	3/4"	20	28	16	9	27	32
	355	SMEX/N 1 NPT	1"	26	34	19	11	32	41



Silenziatore con rete microforata inox AISI 316L ribattuta su base esagonale in acciaio inox AISI 316L filettatura NPT  
Silencer with micro grid of stainless steel AISI 316L - AISI 316L hexagonal base with thread NPT

## Silenziatore Esagono Base • SEB/X • Hexagonal Base Silencer

SEB/X

Codice

Articolo

A

Ø

B

C

D

E

H

CH



361

SEB/X 1/8

1/8"

6,5

8,2

9

7

4,5

29

12

362

SEB/X 1/4

1/4"

9

10,5

12,5

9

4,5

33

15

363

SEB/X 3/8

3/8"

11

12,5

15

9

5

40

19

364

SEB/X 1/2

1/2"

15

16

18

9,5

6,5

48

23

365

SEB/X 3/4

3/4"

20

22

24,5

11

7

58

30

366

SEB/X 1

1"

25

27,5

29,5

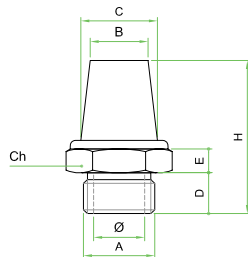
15

8

72

36

INOX



*Silenziatore conico in acciaio inox AISI 316L sinterizzato ribattuto su base esagonale in acciaio inox AISI 316L  
AISI 316L silencer - AISI 316L hexagonal base*