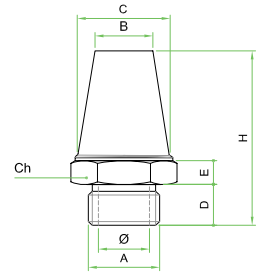


Silenziatore Esagono Base • SEB • Hexagonal Base Silencer

SEB



Codice	Articolo	A	Ø	B	C	D	E	H	CH
1011	SEB M5	M.5	2,8	4,5	5,5	3,5	4	17	7
1012	SEB 1/8	1/8"	7	8,5	10,5	4,5	3,8	21	12
1013	SEB 1/4	1/4"	9,5	11	12,5	6	4,5	27	15
1014	SEB 3/8	3/8"	12	14	17	7	5,4	35	19
1015	SEB 1/2	1/2"	15,5	17	20,5	8	6	41,5	23
1016	SEB 3/4	3/4"	19,5	21	26,5	9	7,5	54	30
1017	SEB 1	1"	26	26,5	33	11	9	66	36

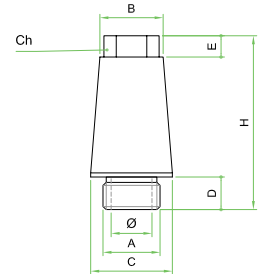


Silenziatore conico in bronzo sferico sinterizzato su base esagonale in acciaio ramato
Sintered spherical bronze conical silencer - Copper-plated steel hexagonal base

CH



Codice	Articolo	A	Ø	B	C	D	E	H	CH
1360	SET M5	M.5	2,5	7,5	8,5	5	-	19,5	-
1361	SET 1/8	1/8"	7	9,8	11,5	4,5	3	22,5	8
1362	SET 1/4	1/4"	9,5	12,5	15	6	4	28	10
1363	SET 3/8	3/8"	13	16	19	7	5	36	13
1364	SET 1/2	1/2"	16	19	23	8	6	44	15
1365	SET 3/4	3/4"	22	24,5	30	9	6	56	19
1366	SET 1	1"	28	30	37	11	7	69	24



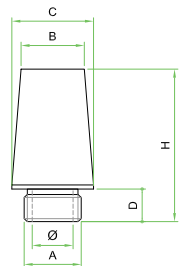
Silenziatore con testa esagonale in bronzo sferico sinterizzato su base circolare in acciaio ramato
Sintered spherical bronze silencer - hexagonal head - Copper-plated steel circular base

Silenziatore Circolare • SC • Silencer with Circular Base

SC



Codice	Articolo	A	Ø	B	C	D	H
184	SC 1/8	1/8"	7	9	11,5	4,5	22
185	SC 1/4	1/4"	9,5	12,5	15	6	26
186	SC 3/8	3/8"	13	15,5	19	7	34,5
187	SC 1/2	1/2"	16	18,5	23	8	43
188	SC 3/4	3/4"	22	24,5	30	9	50
189	SC 1	1"	28	31	37	11	60,5



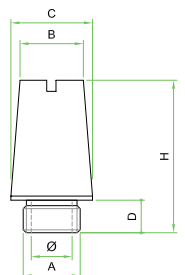
Silenziatore conico in bronzo sferico sinterizzato su base circolare in acciaio ramato
Sintered spherical bronze conical silencer - Copper-plated steel circular base

Silenziatore Circolare Cacciavite • SCC • Circular Silencer with Screwdriver Cutting

SCC



Codice	Articolo	A	Ø	B	C	D	H
190	SCC 1/8	1/8"	7	9	11,5	4,5	22
191	SCC 1/4	1/4"	9,5	12,5	15	6	26
192	SCC 3/8	3/8"	13	15,5	19	7	34,5
193	SCC 1/2	1/2"	16	18,5	23	8	43
194	SCC 3/4	3/4"	22	24,5	30	9	50
195	SCC 1	1"	28	31	37	11	60,5



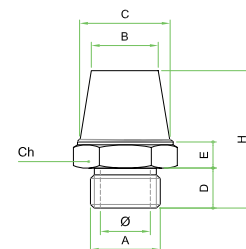
Silenziatore con taglio cacciavite in bronzo sferico sinterizzato su base circolare in acciaio ramato
Sintered spherical bronze silencer with screwdriver cutting - Copper-plated steel circular base

Silenziatore Tronco Esagono • STE • Hexagonal Half Height Silencer

STE



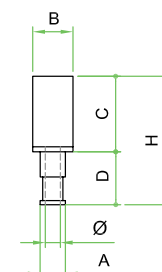
Codice	Articolo	A	Ø	B	C	D	E	H	CH
1401	STE 1/8	1/8"	7	10	10,5	4,5	3,8	15	12
1402	STE 1/4	1/4"	9,5	12	12,5	6	4,5	19	15
1403	STE 3/8	3/8"	12	16	17	7	5,4	26	19
1404	STE 1/2	1/2"	15,5	19	20,5	8	6	29	23
1405	STE 3/4	3/4"	19,5	24	26,5	9	7,5	33	30
1406	STE 1	1"	26	30	33	11	9	44	36



Silenziatore tronco cono in bronzo sferico sinterizzato su base esagonale in acciaio ramato
Sintered spherical bronze half-height silencer - Copper-plated steel hexagonal base



1232	SIB 5	4,8	3	8	16	10	26
1233	SIB 3,5	3,3	2	8	16	10	26



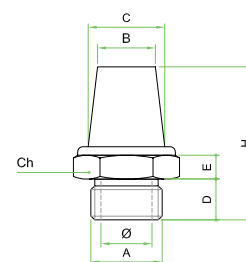
Silenziatore cilindrico in bronzo sferico sinterizzato su innesto a baionetta in acciaio ramato
Sintered spherical bronze cylindrical silencer - Copper-plated bayonet coupling

Silenziatore Esagono Base • SEB/C • Hexagonal Base Silencer

SEB/C



Codice	Articolo	A	Ø	B	C	D	E	H	CH
120	SEB/C M5	M.5	2,5	3	4	4	3	17	8
121	SEB/C 1/8	1/8"	6	8	8,5	6	4	26	13
122	SEB/C 1/4	1/4"	8,5	9	10,5	8	5	34	16
123	SEB/C 3/8	3/8"	11,5	12	13	8	5	41	19
124	SEB/C 1/2	1/2"	15	16	18	10	6	46	24
125	SEB/C 3/4	3/4"	20	21	25,5	10	6	56	30
126	SEB/C 1	1"	26	26,5	30,5	10	6	66	36



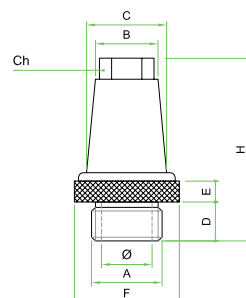
Silenziatore conico in bronzo sferico sinterizzato ribattuto su base esagonale in ottone
Sintered spherical bronze conical silencer - Brass hexagonal base

Silenziatore Esagono Testa • SET/C • Hexagonal Head Silencer

SET/C




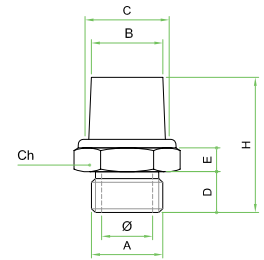
Codice	Articolo	A	Ø	B	C	D	E	F	H	CH
128	SET/C 1/8	1/8"	6	8,5	9	7	4	13	27	6
129	SET/C 1/4	1/4"	8,5	10	11,5	8	4,5	16	30	7
130	SET/C 3/8	3/8"	11,5	13	13,5	8	5	19	40	10
131	SET/C 1/2	1/2"	15	16	18	10	5	24	46	13
132	SET/C 3/4	3/4"	20	20,5	24,5	10	5	30	54	17
133	SET/C 1	1"	26	27	31	10	6	38	61	22



Silenziatore con testa esagonale in bronzo sferico sinterizzato ribattuto su base circolare in ottone
Sintered spherical bronze silencer - hexagonal head - Brass circular base


Silenziatore Tronco Esagono Base • SEM/C • Hexagonal Half Height Silencer

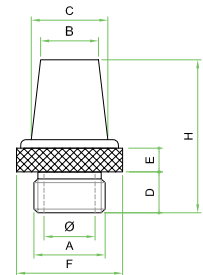
SEM/C	Codice	Articolo	A	Ø	B	C	D	E	H	CH
	230	SEM/C M5	M.5	2,5	5	5,5	4	3	16	8
	231	SEM/C 1/8	1/8"	6	8	8,5	6	4	20	13
	232	SEM/C 1/4	1/4"	8,5	11	10,5	8	5	26	16
	233	SEM/C 3/8	3/8"	11,5	12,5	13	8	5	29,5	19
	234	SEM/C 1/2	1/2"	15	16	18	10	6	35	24
	235	SEM/C 3/4	3/4"	20	22	25,5	10	6	39	30
	236	SEM/C 1	1"	26	29	30,5	10	6	45	36



Silenziatore tronco cono in bronzo sferico sinterizzato ribattuto su base esagonale in ottone
Sintered spherical bronze half-height silencer - Conical shape - Brass hexagonal base


Silenziatore Base Zigrinata • SBZ • Knurled Base Silencer

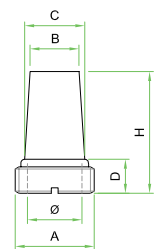
SBZ	Codice	Articolo	A	Ø	B	C	D	E	H	F
	162	SBZ 1/8	1/8"	6	8,5	9	7	4	27	13
	163	SBZ 1/4	1/4"	8,5	11	11	8	4,5	34	16
	164	SBZ 3/8	3/8"	11,5	14	13,5	8	5	41	19
	165	SBZ 1/2	1/2"	15	17	18	10	5	46	24
	166	SBZ 3/4	3/4"	20	21	25	10	5	56	30
	167	SBZ 1	1"	26	26,5	31	10	6	66	38



Silenziatore conico in bronzo sferico sinterizzato ribattuto su base circolare zigrinata in ottone
Sintered spherical bronze conical silencer - Brass Circular knurled base


Silenziatore Taglio Cacciavite Cono • STCC • Conical Silencer with Screwdriver Cutting

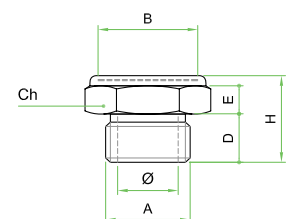
STCC	Codice	Articolo	A	Ø	B	C	D	H
	208	STCC 1/8	1/8"	5,5	3,5	4,5	5	15
	209	STCC 1/4	1/4"	7	4,5	6	6	18
	210	STCC 3/8	3/8"	9,5	8	9	7	21
	211	STCC 1/2	1/2"	12,5	9,5	11	8	27
	212	STCC 3/4	3/4"	19	16	18	8	36
	213	STCC 1	1"	24	22	25	10	48



Silenziatore conico in bronzo sferico sinterizzato ribattuto su base filettata in ottone con taglio cacciavite
Sintered spherical bronze conical silencer - Brass base with screwdriver cutting


Silenziatore Pastiglia Esagono • SPE • Hexagonal Disk Silencer

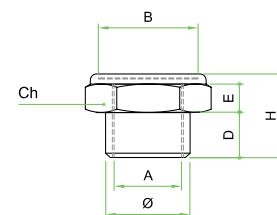
SPE	Codice	Articolo	A	Ø	B	D	E	H	CH
	141	SPE M5	M.5	2,5	5	4	3	8,5	8
	142	SPE 1/8	1/8"	6	9	6	4	12	13
	143	SPE 1/4	1/4"	8,5	11	8	5	16	16
	144	SPE 3/8	3/8"	11,5	14	8	5	17	19
	145	SPE 1/2	1/2"	15	19	10	6	18	24
	146	SPE 3/4	3/4"	20	25	10	6	19	30
	147	SPE 1	1"	26	31	10	6	20	36



Silenziatore con pastiglia in bronzo sferico sinterizzato ribattuto su base esagonale in ottone
Sintered bronze silencer spherical disk - Brass hexagonal base


Silenziatore Pastiglia Esagono Femmina • SPEF • Hexagonal Disk Female Silencer

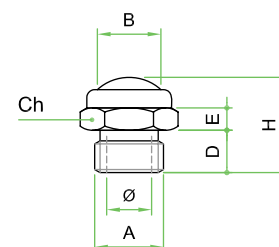
SPEF	Codice	Articolo	A	Ø	B	D	E	H	CH
	240	SPEF M5	M.5	7	5	4	3	8,5	8
	241	SPEF 1/8	1/8"	12	9	6	4	12	13
	242	SPEF 1/4	1/4"	15	11	8	5	16	16
	243	SPEF 3/8	3/8"	19	14	8	5	17	19
	244	SPEF 1/2	1/2"	23	19	10	6	18	24
	245	SPEF 3/4	3/4"	29	25	10	6	19	30
	246	SPEF 1	1"	35	31	12	6	20	36



Silenziatore con pastiglia in bronzo sferico sinterizzato ribattuta su base esagonale in ottone filettatura femmina
Sintered bronze silencer spherical disk - Brass hexagonal base with thread female


Silenziatore Cupola Esagono • SCE • Hexagonal Domed Silencer

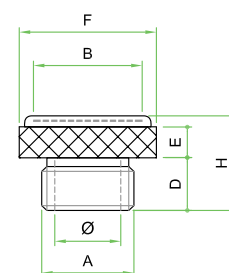
SCE	Codice	Articolo	A	Ø	B	D	E	H	CH
	219	SCE 1/8	1/8"	6	9,5	6	4	16	13
	220	SCE 1/4	1/4"	8,5	11	8	5	19	16
	221	SCE 3/8	3/8"	11,5	14,5	8	5	21	19
	222	SCE 1/2	1/2"	15	19	10	6	23	24
	223	SCE 3/4	3/4"	20	24	10	6	27	30
	224	SCE 1	1"	26	31	10	6	29	36



Silenziatore con cupola in bronzo sferico sinterizzato ribattuta su base esagonale in ottone
Sintered spherical bronze domed silencer - Brass hexagonal base


Silenziatore Pastiglia Zigrinato • SPZ • Disk Knurled Silencer

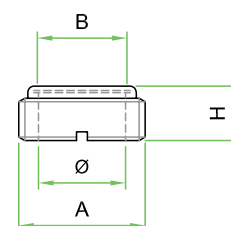
SPZ	Codice	Articolo	A	Ø	B	D	E	H	F
	148	SPZ M5	M5	2,5	5	3,5	2	10	8
	149	SPZ 1/8	1/8"	6	8	7	4	13	13
	150	SPZ 1/4	1/4"	8,5	12	8	4,5	16	16
	151	SPZ 3/8	3/8"	11,5	15	8	5	14	19
	152	SPZ 1/2	1/2"	15	19	10	5	18	24
	153	SPZ 3/4	3/4"	20	24	10	5	18	30
	154	SPZ 1	1"	26	30	10	6	19	38



Silenziatore con pastiglia in bronzo sferico sinterizzato ribattuta su base circolare zigrinata in ottone
Sintered bronze silencer spherical disk - Brass Circular knurled base


Silenziatore Pastiglia Taglio Cacciavite • SPC • Disk Screwdriver Silencer

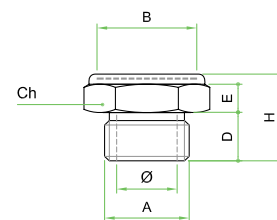
SPC	Codice	Articolo	A	Ø	B	H
	155	SPC 1/8	1/8"	5,5	5,5	4,5
	156	SPC 1/4	1/4"	6	8	6
	157	SPC 3/8	3/8"	9,5	9	7
	158	SPC 1/2	1/2"	12,5	12	9
	159	SPC 3/4	3/4"	19	20	9
	160	SPC 1	1"	24	25	10




Silenziatore con pastiglia in bronzo sferico sinterizzato ribattuta su base filettata in ottone con taglio cacciavite
Sintered bronze silencer spherical disk - Brass threaded base with screwdriver cutting

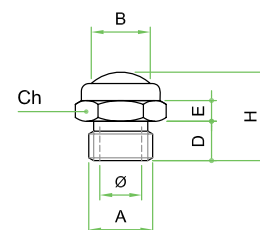
Silenziatore Esagono Rete Microforata • SERM • Hexagonal Micro-Grid Silencer

SERM	Codice	Articolo	A	Ø	B	D	E	H	CH
	376	SERM 1/8	1/8"	6	10	6	4	12	13
	377	SERM 1/4	1/4"	8,5	12	8	5	16	16
	378	SERM 3/8	3/8"	11,5	17	8	5	17	19
	379	SERM 1/2	1/2"	15	21	10	6	18	24
	380	SERM 3/4	3/4"	20	27	10	6	19	30
	381	SERM 1	1"	26	34	10	6	20	36



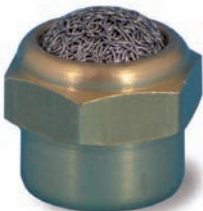
Silenziatore con rete microforata in acciaio inox AISI 304 ribattuta su base esagonale in ottone
Silencer with micro grid of stainless steel AISI 304 - Brass hexagonal base

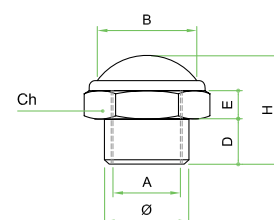
		Articolo	A	Ø	B	D	E	H	CH
	100	SRE 1/8	1/8"	6	9,5	6	4	15	13
	101	SRE 1/4	1/4"	8,5	11	8	5	18	16
	102	SRE 3/8	3/8"	11,5	14,5	8	5	20	19
	103	SRE 1/2	1/2"	15	19	10	6	22	24
	104	SRE 3/4	3/4"	20	24	10	6	26	30
	105	SRE 1	1"	26	31	10	6	28	36
	106	SRE M5	M5	2,5	5,5	4	3	8	8



Silenziatore con cupola in filo inox AISI 304 ribattuta su base esagonale in ottone
Silencer with dome of stainless steel AISI 304 - Brass hexagonal base


Silenziatore Rete Esagono Femmina • SREF • Hexagonal Grid Female Silencer

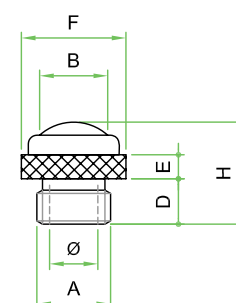
SREF	Codice	Articolo	A	Ø	B	D	E	H	CH
	250	SREF M5	M.5	7	5,5	4	3	8	8
	251	SREF 1/8	1/8"	12	9,5	6	4	15	13
	252	SREF 1/4	1/4"	15	11	8	5	18	16
	253	SREF 3/8	3/8"	19	14,5	8	5	20	19
	254	SREF 1/2	1/2"	23	19	10	6	22	24
	255	SREF 3/4	3/4"	29	24	10	6	26	30
	256	SREF 1	1"	35	31	10	6	28	36



Silenziatore con cupola in filo inox AISI 304 ribattuta su base esagonale in ottone filettatura femmina
Silencer with dome of stainless steel AISI 304 - Brass hexagonal base with thread female

Silenziatore Rete Zigrinato • SRZ • Grid Knurled Silencer

SRZ	Codice	Articolo	A	Ø	B	D	E	H	F
	134	SRZ M5	M.5	2,5	5,5	3,5	2	8	8
	135	SRZ 1/8	1/8"	6	9,5	7	4	14	13
	136	SRZ 1/4	1/4"	8,5	11	8	5,5	18	16
	137	SRZ 3/8	3/8"	11,5	14,5	8	5	20	19
	138	SRZ 1/2	1/2"	15	19	10	5	22	24
	139	SRZ 3/4	3/4"	20	24	10	5	24	30
	140	SRZ 1	1"	26	31	10,5	6	27	38



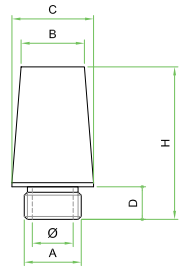
Silenziatore con cupola in filo inox AISI 304 ribattuta su base circolare zigrinata in ottone
Silencer with dome of stainless steel AISI 304 - Brass Circular knurled base

Silenziatore Circolare Ottone • SCO • Circular Brass Silencer

SCO



Codice	Articolo	A	Ø	B	C	D	H
560	SCO M5	M.5	2,5	6	6	4,5	14
561	SCO 1/8	1/8"	5,5	8	12	6	22,5
562	SCO 1/4	1/4"	7,5	10,5	15	7,5	26
563	SCO 3/8	3/8"	10,5	15	19	8	36
564	SCO 1/2	1/2"	15	17,5	23	9	43,5
565	SCO 3/4	3/4"	21	25	29	10	53
566	SCO 1	1"	26	30	36	11,5	65



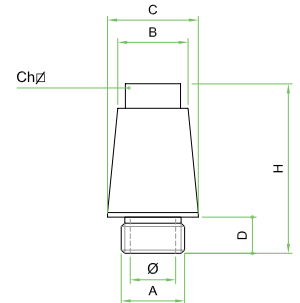
Silenziatore conico in bronzo sferico sinterizzato su base in ottone
Sintered spherical bronze conical silencer - Brass circular base

Silenziatore Circolare Ottone Quadro • SCOQ • Circular Brass Framework in the Head Silencer

SCOQ



Codice	Articolo	A	Ø	B	C	D	H	CH
581	SCOQ 1/8	1/8"	5,5	10	12	6	21	6,5
582	SCOQ 1/4	1/4"	7,5	11	15	7,5	28	8
583	SCOQ 3/8	3/8"	10,5	14	19	8	36	10
584	SCOQ 1/2	1/2"	15	20	23	9	40,5	14
585	SCOQ 3/4	3/4"	21	26	29	10	50	19
586	SCOQ 1	1"	26	32	36	11,5	63	22,5



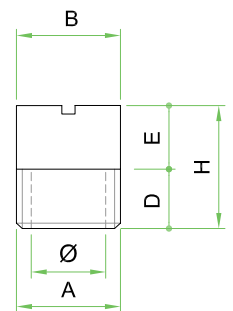
Silenziatore con testa quadra in bronzo sferico sinterizzato su base circolare in ottone
Sintered spherical bronze silencer with square head - Brass circular base

Silenziatore Tappo Taglio • STT • Cut Silencer Cap

STT



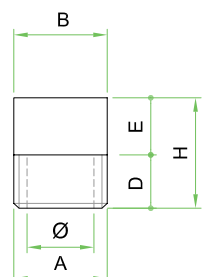
Codice	Articolo	A	Ø	B	D	E	H
400	STT 1/8	1/8"	5	9	6	6,5	12,5
401	STT 1/4	1/4"	8	12,5	5,5	8	13,5
402	STT 3/8	3/8"	10	16	7,5	8,5	16
403	STT 1/2	1/2"	15	20	9,5	10	19,5
404	STT 3/4	3/4"	20	26	9,5	13	22,5
405	STT 1	1"	25	33	12	12	24



Silenziatore a tappo con taglio cacciavite in testa in bronzo sinterizzato su base filettata in ottone
Sintered spherical bronze cap silencer with screwdriver cutting head - Brass threaded base



Codice	Articolo	A	Ø	B	D	E	H
406	ST 1/8	1/8"	5	9	6	6,5	12,5
407	ST 1/4	1/4"	8	12,5	5,5	8	13,5
408	ST 3/8	3/8"	10	16	7,5	8,5	16
409	ST 1/2	1/2"	15	20	9,5	10	19,5
410	ST 3/4	3/4"	20	26	9,5	13	22,5
411	ST 1	1"	25	33	12	12	24



Silenziatore a tappo in bronzo sferico sinterizzato su base filettata in ottone
Sintered spherical bronze cap silencer - Brass threaded base

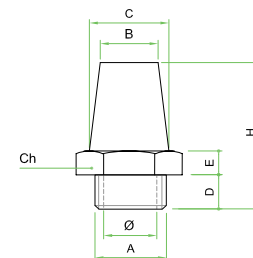
Silenziatore Integrale Esagono • SIE • Hexagonal Integral Silencer

SIE

Codice Articolo A Ø B C D E H CH



196	SIE 1/8	1/8"	4	8	10	6	4	28	13
197	SIE 1/4	1/4"	6	12	14	8	4	34	17
198	SIE 3/8	3/8"	9	15	17	10	5	36	22
199	SIE 1/2	1/2"	12	19	20,5	12	7	44	27
200	SIE 3/4	3/4"	16	22	25	14	10	54	32
201	SIE 1	1"	22	28	31	16	10	66	41



Silenziatore integrale in bronzo sferico sinterizzato con base esagonale
Sintered spherical bronze integral silencer - Hexagonal base

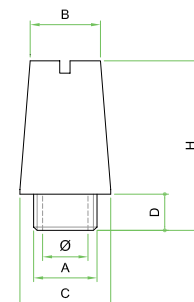
Silenziatore Integrale Cacciavite • SIC • Integral Screwdriver Silencer

SIC

Codice Articolo A Ø B C D H



202	SIC 1/8	1/8"	4	8	11	5,5	21
203	SIC 1/4	1/4"	6	10,5	14	8,5	27
204	SIC 3/8	3/8"	9	15	18	11	36
205	SIC 1/2	1/2"	11	19	24	11	44
206	SIC 3/4	3/4"	17	23,5	30	13	65
207	SIC 1	1"	22	26,5	36	15	75



Silenziatore integrale in bronzo sferico sinterizzato con taglio cacciavite in testa
Sintered spherical bronze integral silencer with screwdriver cutting head

Silenziatore Conico Integrale • SCI • Integral Conical Silencer

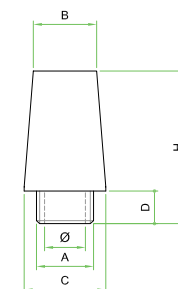
SCI

Codice Articolo A Ø B C D H



214	SCI 1" 1/4	1" 1/4	33	34	45	16,5	84
215	SCI 1" 1/2	1" 1/2	37	38,5	53	16,5	95
216	SCI 2"	2"	48	46	65	20	106
217	SCI 2" 1/4	2" 1/4	55	50	72	22	108
218	SCI 2" 1/2	2" 1/2	64	66	82	22	110

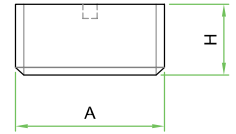
MAXI



Silenziatore conico integrale dimensioni maxi in bronzo sferico sinterizzato
Sintered spherical bronze integral maxi silencer

Silenziatore Pastiglia Cacciavite Integrale • SPCI • Integral Disk Screwdriver Silencer

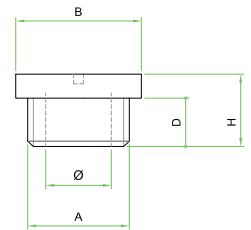
SPCI	Codice	Articolo	A	H
	450	SPCI 1/8	1/8"	6,5
	451	SPCI 1/4	1/4"	7
	452	SPCI 3/8	3/8"	7,5
	453	SPCI 1/2	1/2"	8



Silenziatore integrale a pastiglia con taglio cacciavite in bronzo sferico sinterizzato
Sintered spherical bronze integral disk silencer


Silenziatore Tappo Integrale • STI • Integral Cap Silencer

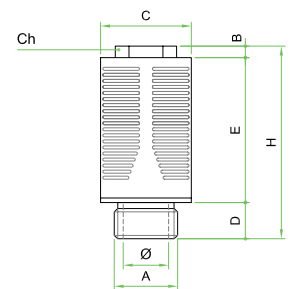
STI	Codice	Articolo	A	Ø	B	D	H
	426	STI 1/8	1/8"	4,5	11,5	6	10
	227	STI 1/4	1/4"	7	14	8	12
	228	STI 3/8	3/8"	11	19	8	12



Silenziatore integrale a tappo con taglio cacciavite in bronzo sferico sinterizzato
Sintered spherical bronze cap silencer with screwdriver cutting


Silenziatore Plastica Dinamico • SPD • Plastic Dynamic Silencer

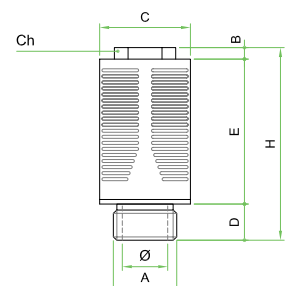
SPD	Codice	Articolo	A	Ø	B	C	D	E	H	CH
	168	SPD 1/8	1/8"	7	2,5	15,5	7	26	35	10
	169	SPD 1/4	1/4"	9	3	19,5	7	32	43	12
	170	SPD 3/8	3/8"	12	3	24,5	11	45	59	16
	171	SPD 1/2	1/2"	12	3	24,5	11	45	59	16
	172	SPD 3/4	3/4"	20	10	50	18	90	118	25
	173	SPD 1	1"	20	10	50	18	90	118	25



Silenziatore plastica dinamico autopulente con resina acetica fonoassorbente
Dynamic Self-cleaning plastic silencer

Silenziatore Plastica Statico • SPS • Plastic Static Silencer

SPS	Codice	Articolo	A	Ø	B	C	D	E	H	CH
	174	SPS 1/8	1/8"	7	2,5	15,5	7	26	35	10
	175	SPS 1/4	1/4"	9	3	19,5	7	32	43	12
	176	SPS 3/8	3/8"	12	3	24,5	11	45	59	16
	177	SPS 1/2	1/2"	12	3	24,5	11	45	59	16
	178	SPS 3/4	3/4"	20	10	50	18	90	118	25
	179	SPS 1	1"	20	10	50	18	90	118	25



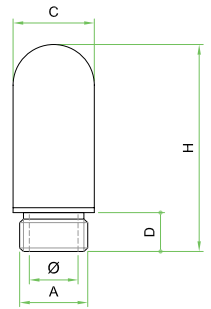
Silenziatore plastica statico con cartuccia in politene sinterizzato
Silencer plastic with static polythene sintered

Silenziatore Plastica Politene • SPPE • Porous Polythene Silencer

SPPE



Codice	Articolo	A	Ø	C	D	H
525	SPPE M5	M.5	3	7,5	4	24,5
526	SPPE 1/8	1/8"	5	13	7	33,5
527	SPPE 1/4	1/4"	6,5	17	8	40
528	SPPE 3/8	3/8"	10,5	25	11	65
529	SPPE 1/2	1/2"	12	25	11	71
530	SPPE 3/4	3/4"	16	37	15,5	138
531	SPPE 1	1"	22	47,5	19	157



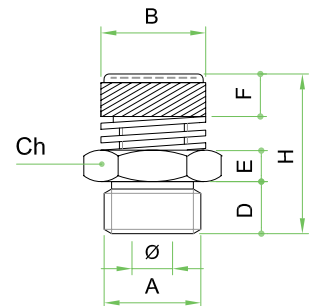
Silenziatore in politene sinterizzato elettrosaldato su raccordo filettato in nylon
Sintered polyethylene silencer welded - Nipple nylon

Valvola Silenziatore Bronzo Regolabile • SBR • Adjustable Bronze Valve Silencer

SBR



Codice	Articolo	A	Ø	B	D	E	F	CH	H min	H max
180	SBR 1/8	1/8"	4	12	6	6,5	8	13	25	28
181	SBR 1/4	1/4"	5	14	8	5,5	8	15	27	31
182	SBR 3/8	3/8"	8	17	10	8	8	22	31	35
183	SBR 1/2	1/2"	8	18	10	7,5	10	22	35	40



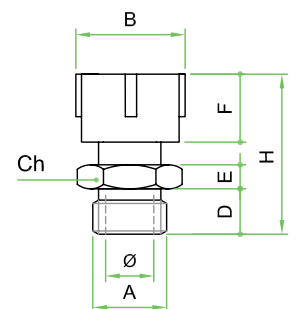
Valvola regolatrice in ottone con silenziatore a pastiglia in bronzo sferico sinterizzato
Brass control valve - Sintered spherical bronze silencer

Valvola Silenziatore Regolabile Bronzo Integrale • TSI • Adjustable Integral Bronze Valve Silencer

TSI



Codice	Articolo	A	Ø	B	D	E	F	CH	H min	H max
225	TSI 1/8	1/8"	4,5	15	8	4	12	14	25	27
226	TSI 1/4	1/4"	6,5	18,5	8	4	14	17	28	30
227	TSI 3/8	3/8"	8	24,5	10	5	16	22	33	38
228	TSI 1/2	1/2"	12,5	29	12	7	18	27	39	46



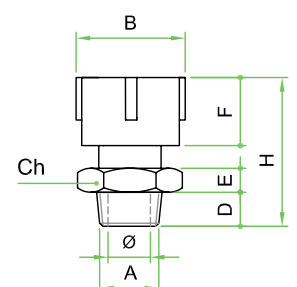
Valvola regolatrice in acciaio nichelato con corpo regolatore in bronzo sferico sinterizzato
Control valve nickel-plated steel - Sintered spherical bronze regulatory body

Valvola Silenziatore Regolabile Bronzo Integrale • TSI/NPT • Adjustable Integral Bronze Valve Silencer

TSI/N



Codice	Articolo	A	Ø	B	D	E	F	CH	H min	H max
225/N	TSI/N 1/8 NPT	1/8"	4	15	7	4	12	14	24	26
226/N	TSI/N 1/4 NPT	1/4"	6	18,5	11	4	14	17	31	34
227/N	TSI/N 3/8 NPT	3/8"	8	24,5	11	5	16	22	33	38
228/N	TSI/N 1/2 NPT	1/2"	12	29	15	7	18	27	42	48



Valvola regolatrice in acciaio nichelato filettatura NPT con corpo regolatore in bronzo sferico sinterizzato
Control valve nickel-plated steel with thread NPT - Sintered spherical bronze regulatory body